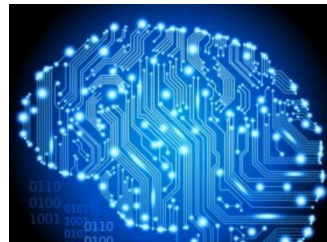




# Lecture 4: Search 3

[http://cs.nju.edu.cn/yuy/course\\_ai16.ashx](http://cs.nju.edu.cn/yuy/course_ai16.ashx)



# Previously...



## Path-based search

### Uninformed search

Depth-first, breadth first, uniform-cost search

### Informed search

Best-first, **A\* search**

# Adversarial search



Competitive environments: Game  
the agents' goals are in conflict

We consider:

- \* two players
- \* zero-sum games



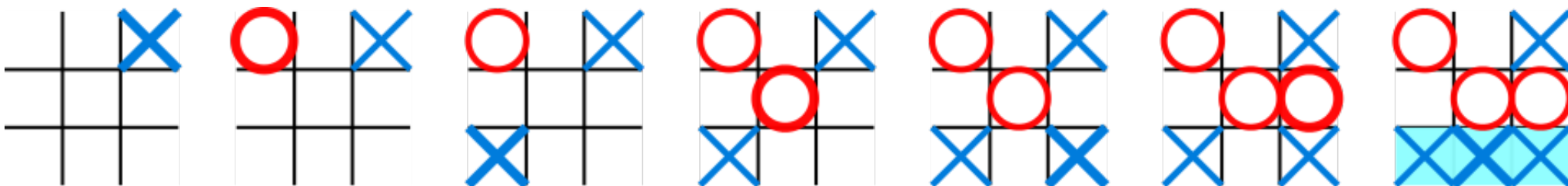
Type of games:

- \* deterministic v.s. chance
- \* perfect v.s. partially observable information

# Example



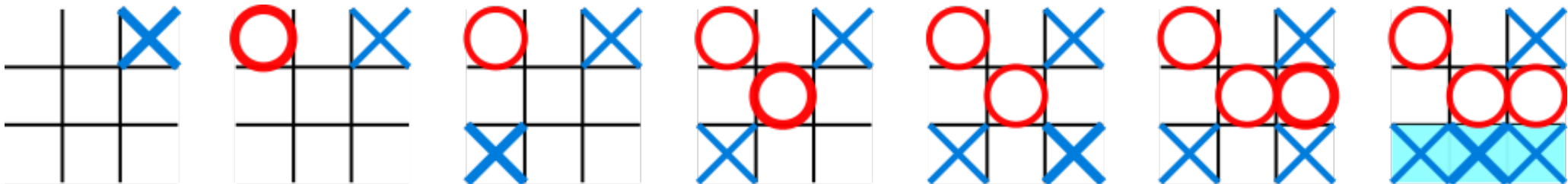
两人轮流在一有九格方盘上划加字或圆圈，谁先把三个同一记号排成横线、直线、斜线，即是胜者



# Definition of a game

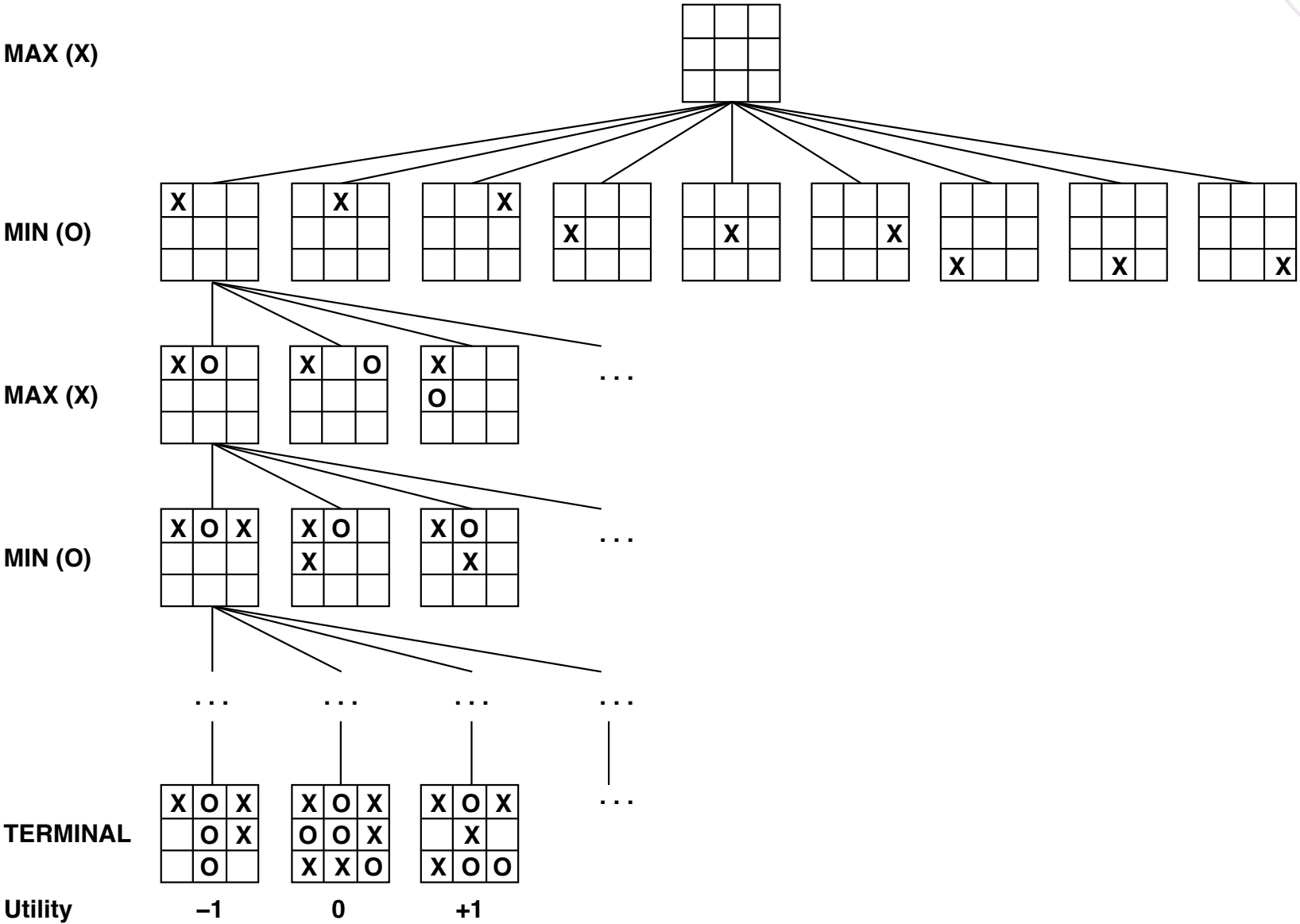


- $S_0$ : The **initial state**, which specifies how the game is set up at the start.
- $\text{PLAYER}(s)$ : Defines which player has the move in a state.
- $\text{ACTIONS}(s)$ : Returns the set of legal moves in a state.
- $\text{RESULT}(s, a)$ : The **transition model**, which defines the result of a move.
- $\text{TERMINAL-TEST}(s)$ : A **terminal test**, which is true when the game is over and false otherwise. States where the game has ended are called **terminal states**.
- $\text{UTILITY}(s, p)$ : A **utility function** (also called an objective function or payoff function),



two players: MAX and MIN

# Tic-tac-toe search tree



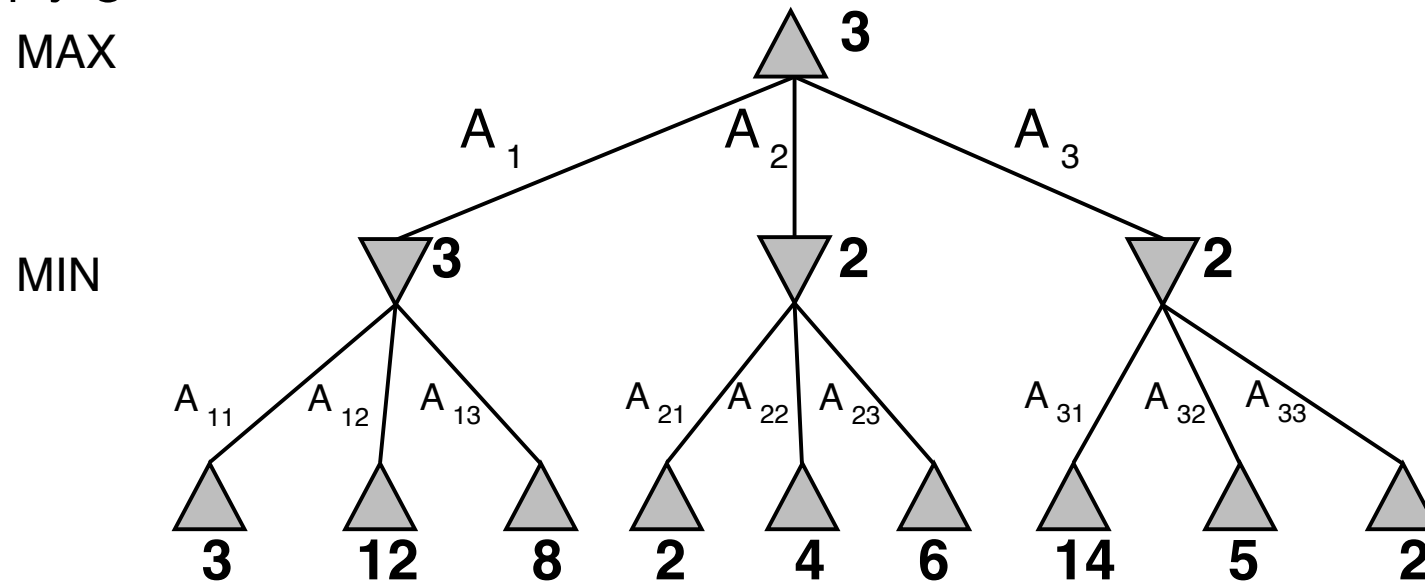
# Optimal decision in games



Perfect play for deterministic, perfect-information games

Idea: choose move to position with highest **minimax value**  
= best achievable payoff against best play

E.g., 2-ply game:



$\text{MINIMAX}(s) =$

$$\begin{cases} \text{UTILITY}(s) & \text{if } \text{TERMINAL-TEST}(s) \\ \max_{a \in \text{Actions}(s)} \text{MINIMAX}(\text{RESULT}(s, a)) & \text{if } \text{PLAYER}(s) = \text{MAX} \\ \min_{a \in \text{Actions}(s)} \text{MINIMAX}(\text{RESULT}(s, a)) & \text{if } \text{PLAYER}(s) = \text{MIN} \end{cases}$$

# Minimax algorithm



**function** MINIMAX-DECISION(*state*) **returns** *an action*

**inputs:** *state*, current state in game

**return** the *a* in ACTIONS(*state*) maximizing MIN-VALUE(RESULT(*a*, *state*))

---

**function** MAX-VALUE(*state*) **returns** *a utility value*

**if** TERMINAL-TEST(*state*) **then return** UTILITY(*state*)

$v \leftarrow -\infty$

**for** *a, s* in SUCCESSORS(*state*) **do**  $v \leftarrow \text{MAX}(v, \text{MIN-VALUE}(s))$

**return** *v*

---

**function** MIN-VALUE(*state*) **returns** *a utility value*

**if** TERMINAL-TEST(*state*) **then return** UTILITY(*state*)

$v \leftarrow \infty$

**for** *a, s* in SUCCESSORS(*state*) **do**  $v \leftarrow \text{MIN}(v, \text{MAX-VALUE}(s))$

**return** *v*



# Properties of Minimax



Complete?? Yes, if tree is finite (chess has specific rules for this)

Optimal?? Yes, against an optimal opponent. Otherwise??

Time complexity??  $O(b^m)$

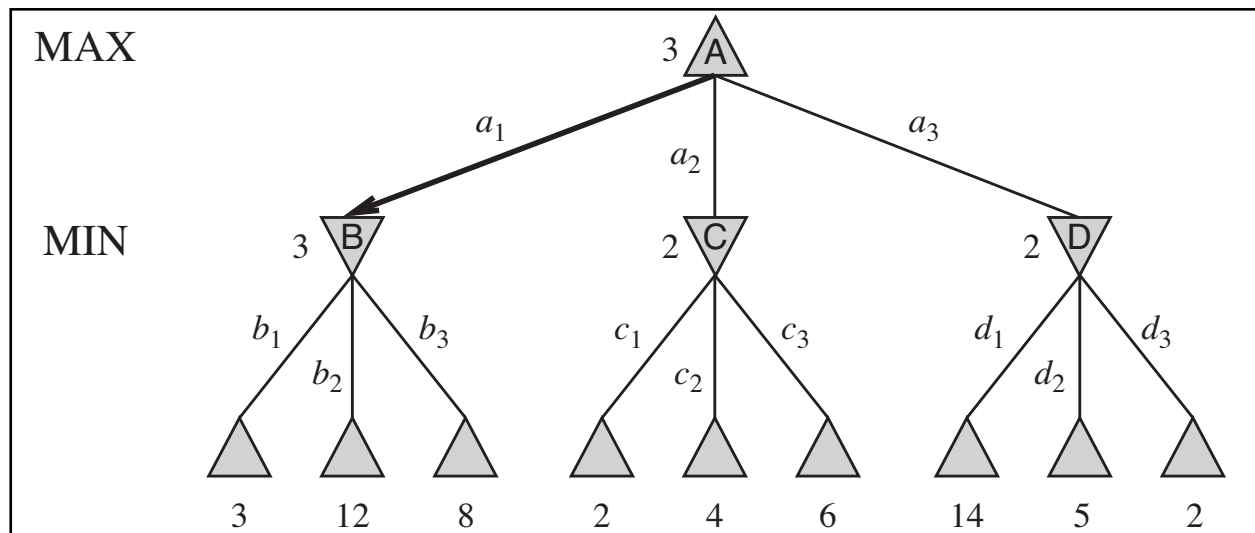
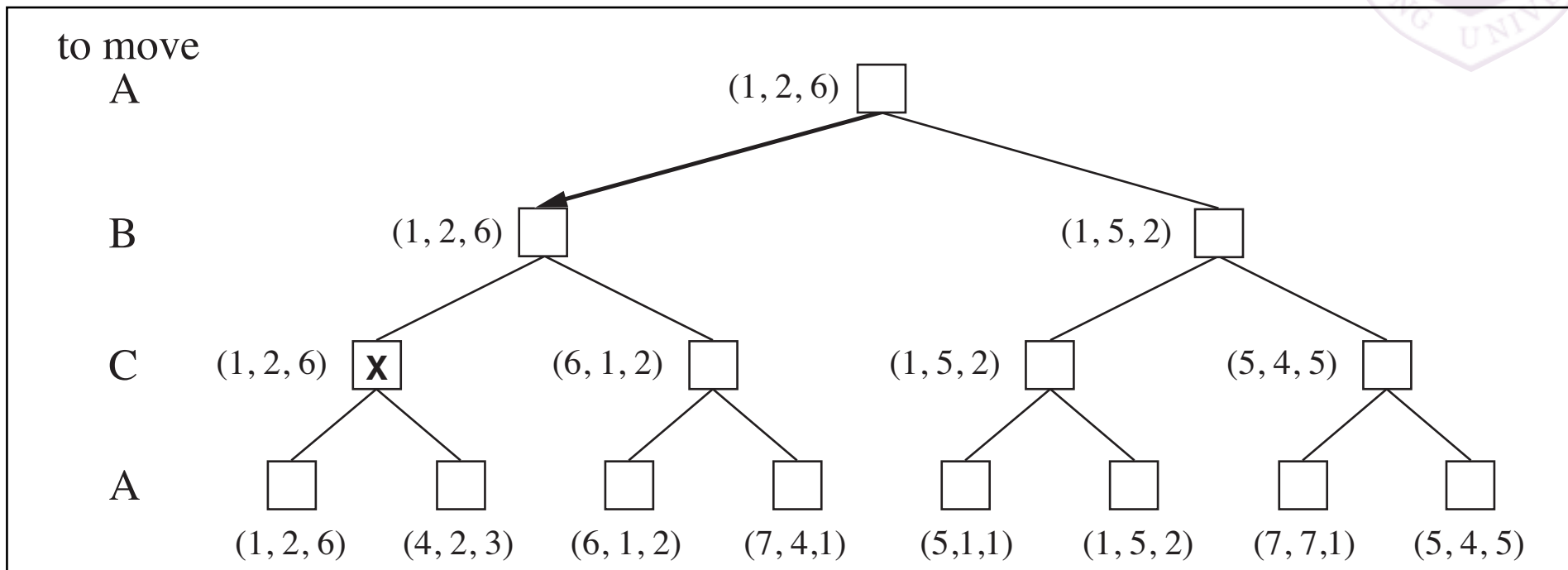
Space complexity??  $O(bm)$  (depth-first exploration)

For chess,  $b \approx 35$ ,  $m \approx 100$  for “reasonable” games  
 $\Rightarrow$  exact solution completely infeasible

# Multiple players



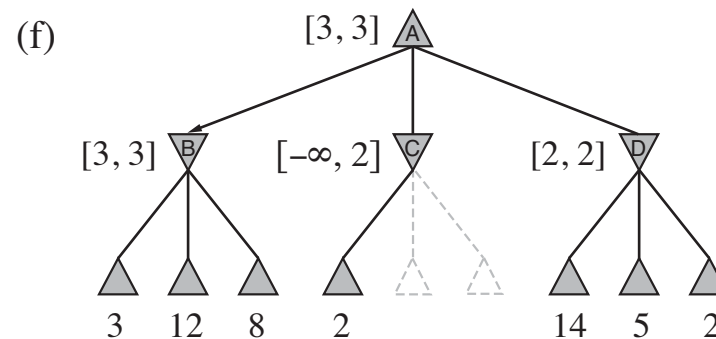
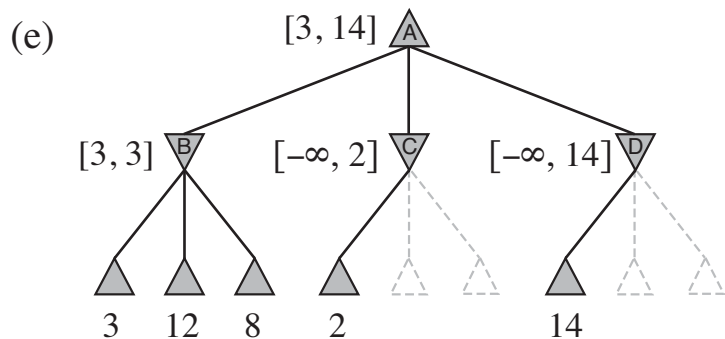
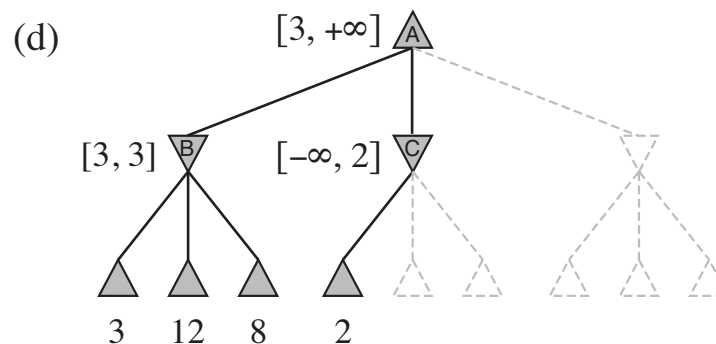
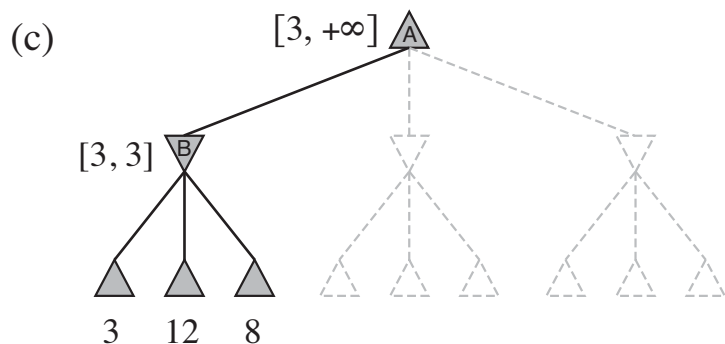
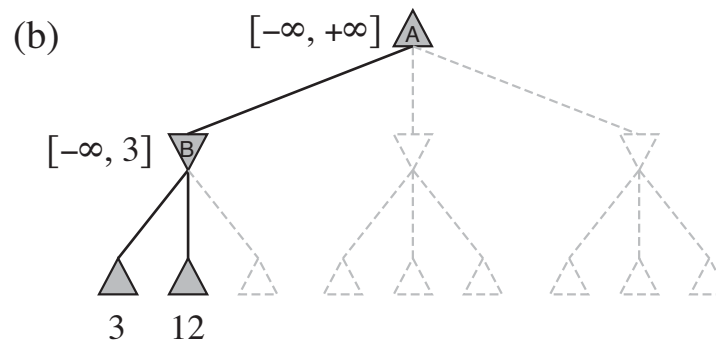
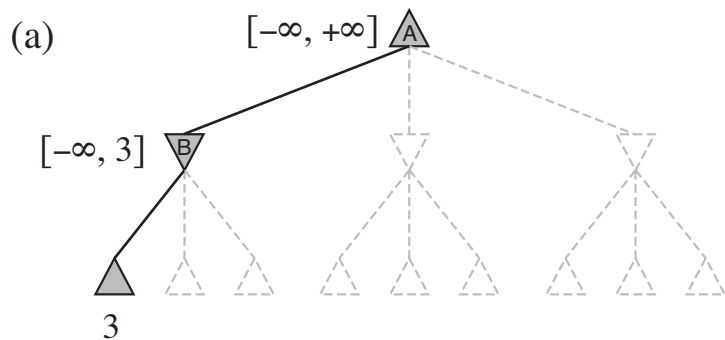
a vector  $\langle v_A, v_B, v_C \rangle$  is used for 3 players



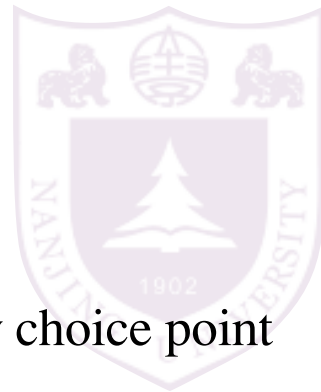
# Alpha-Beta pruning



not all branches are needed

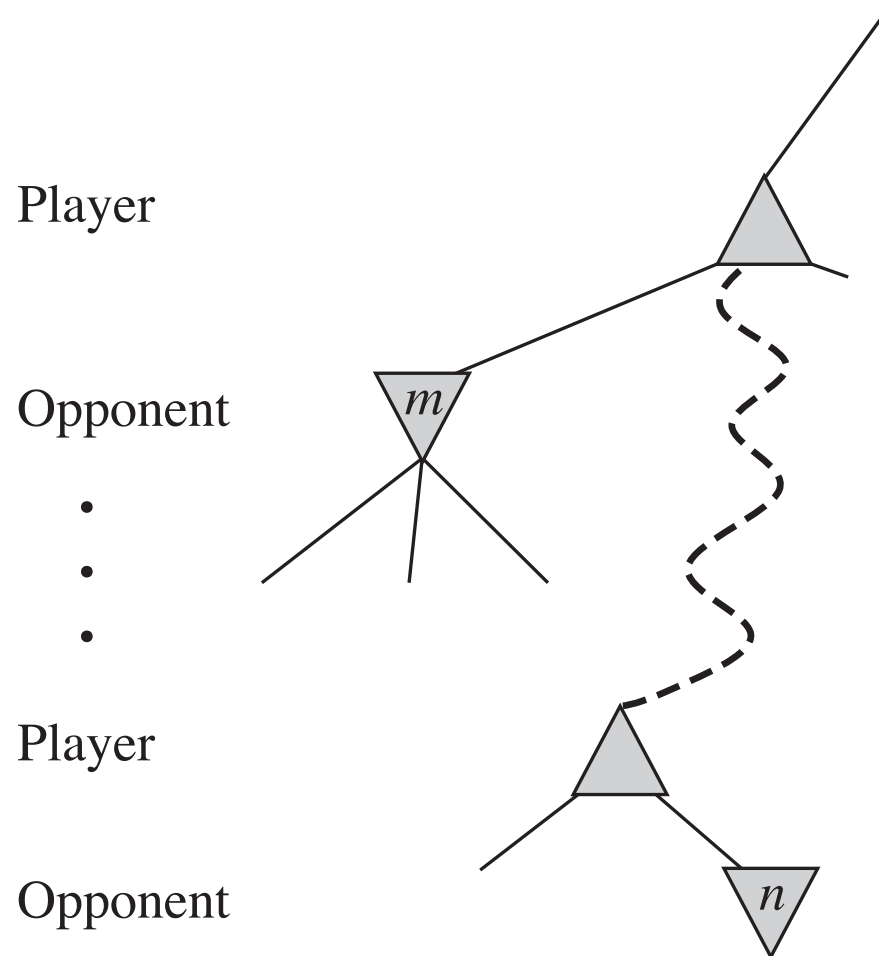


# Alpha-Beta pruning

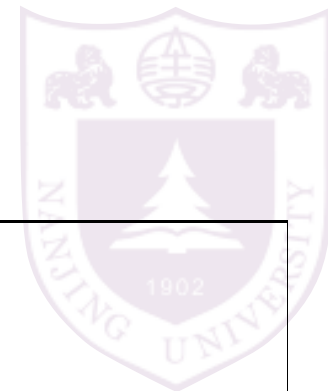


$\alpha$  = the value of the best (i.e., highest-value) choice we have found so far at any choice point along the path for MAX.

$\beta$  = the value of the best (i.e., lowest-value) choice we have found so far at any choice point along the path for MIN.



# Alpha-Beta pruning



**function** ALPHA-BETA-SEARCH(*state*) **returns** an action  
 $v \leftarrow \text{MAX-VALUE}(\textit{state}, -\infty, +\infty)$   
**return** the *action* in ACTIONS(*state*) with value *v*

---

**function** MAX-VALUE(*state*,  $\alpha$ ,  $\beta$ ) **returns** a utility value  
**if** TERMINAL-TEST(*state*) **then return** UTILITY(*state*)  
 $v \leftarrow -\infty$   
**for each** *a* **in** ACTIONS(*state*) **do**  
     $v \leftarrow \text{MAX}(v, \text{MIN-VALUE}(\text{RESULT}(s, a), \alpha, \beta))$   
    **if**  $v \geq \beta$  **then return** *v*  
     $\alpha \leftarrow \text{MAX}(\alpha, v)$   
**return** *v*

---

**function** MIN-VALUE(*state*,  $\alpha$ ,  $\beta$ ) **returns** a utility value  
**if** TERMINAL-TEST(*state*) **then return** UTILITY(*state*)  
 $v \leftarrow +\infty$   
**for each** *a* **in** ACTIONS(*state*) **do**  
     $v \leftarrow \text{MIN}(v, \text{MAX-VALUE}(\text{RESULT}(s, a), \alpha, \beta))$   
    **if**  $v \leq \alpha$  **then return** *v*  
     $\beta \leftarrow \text{MIN}(\beta, v)$   
**return** *v*

# Properties of alpha-beta



Pruning **does not** affect final result

Good move ordering improves effectiveness of pruning

With “perfect ordering,” time complexity =  $O(b^{m/2})$   
⇒ **doubles** solvable depth

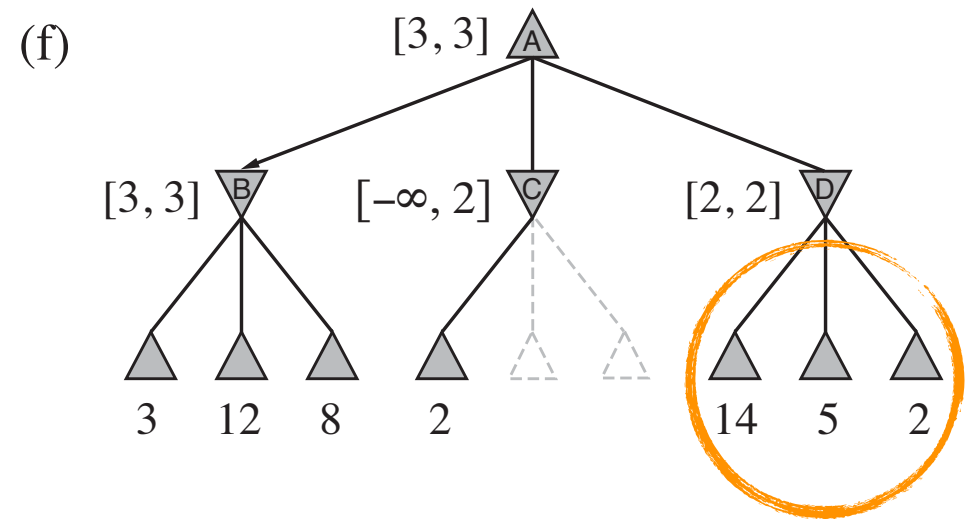
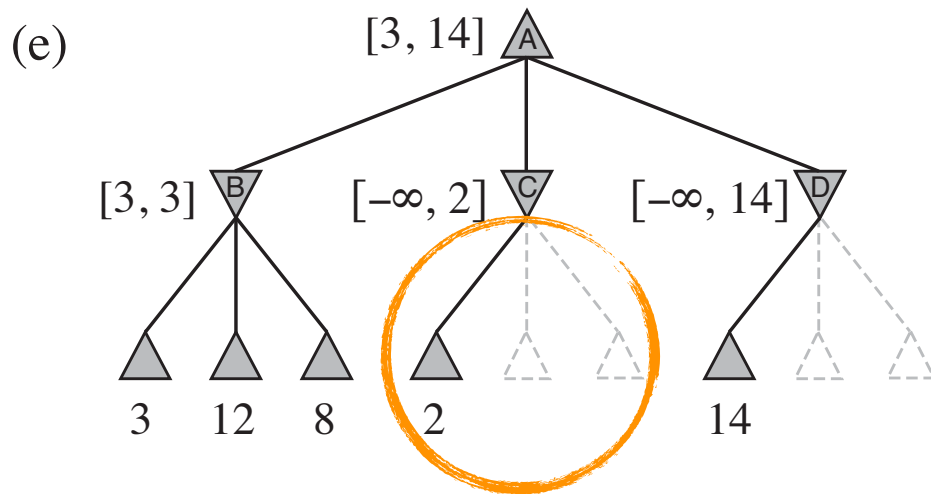
A simple example of the value of reasoning about which computations are relevant (a form of **metareasoning**)

Unfortunately,  $35^{50}$  is still impossible!

# The search order is important



it might be worthwhile to try to examine first the successors that are likely to be best



# Resource limits



Standard approach:

- Use CUTOFF-TEST instead of TERMINAL-TEST  
e.g., depth limit (perhaps add quiescence search)
- Use EVAL instead of UTILITY  
i.e., evaluation function that estimates desirability of position

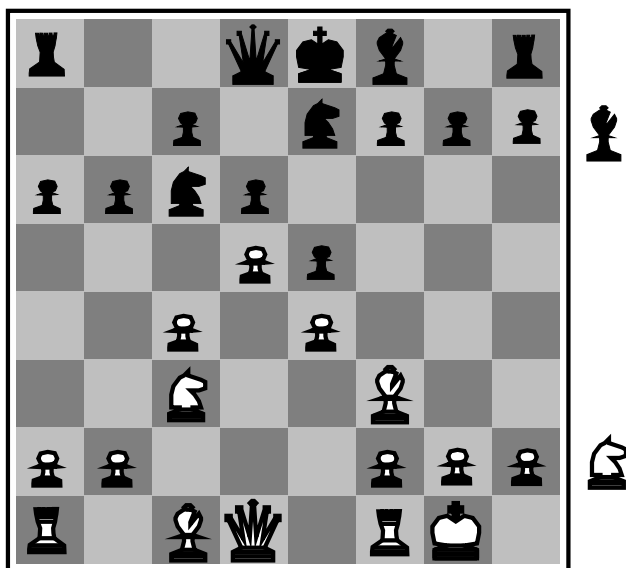
Suppose we have 100 seconds, explore  $10^4$  nodes/second

$\Rightarrow 10^6$  nodes per move  $\approx 35^{8/2}$

$\Rightarrow \alpha\text{-}\beta$  reaches depth 8  $\Rightarrow$  pretty good chess program

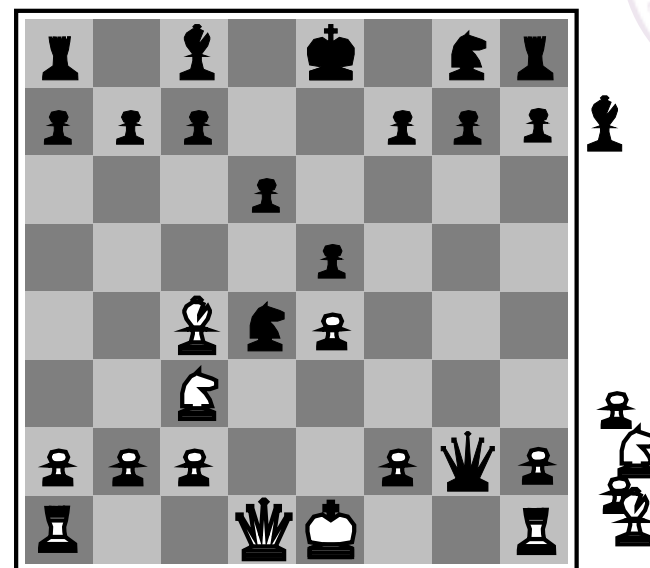


# Evaluation functions



Black to move

White slightly better



White to move

Black winning

For chess, typically **linear** weighted sum of **features**

$$Eval(s) = w_1 f_1(s) + w_2 f_2(s) + \dots + w_n f_n(s)$$

e.g.,  $w_1 = 9$  with

$f_1(s) = (\text{number of white queens}) - (\text{number of black queens}), \text{ etc.}$

# H-Minimax

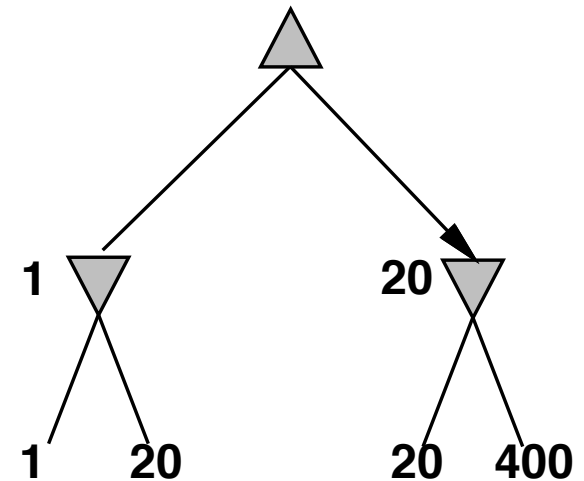
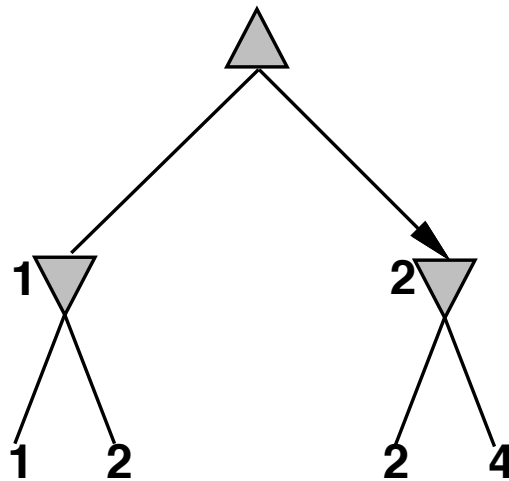


H-MINIMAX( $s, d$ ) =

$$\begin{cases} \text{EVAL}(s) & \text{if CUTOFF-TEST}(s, d) \\ \max_{a \in \text{Actions}(s)} \text{H-MINIMAX}(\text{RESULT}(s, a), d + 1) & \text{if PLAYER}(s) = \text{MAX} \\ \min_{a \in \text{Actions}(s)} \text{H-MINIMAX}(\text{RESULT}(s, a), d + 1) & \text{if PLAYER}(s) = \text{MIN}. \end{cases}$$

MAX

MIN



Behaviour is preserved under any **monotonic** transformation of EVAL

Only the order matters:

payoff in deterministic games acts as an **ordinal utility** function

# Deterministic games in practice



Checkers: Chinook ended 40-year-reign of human world champion Marion Tinsley in 1994. Used an endgame database defining perfect play for all positions involving 8 or fewer pieces on the board, a total of 443,748,401,247 positions.

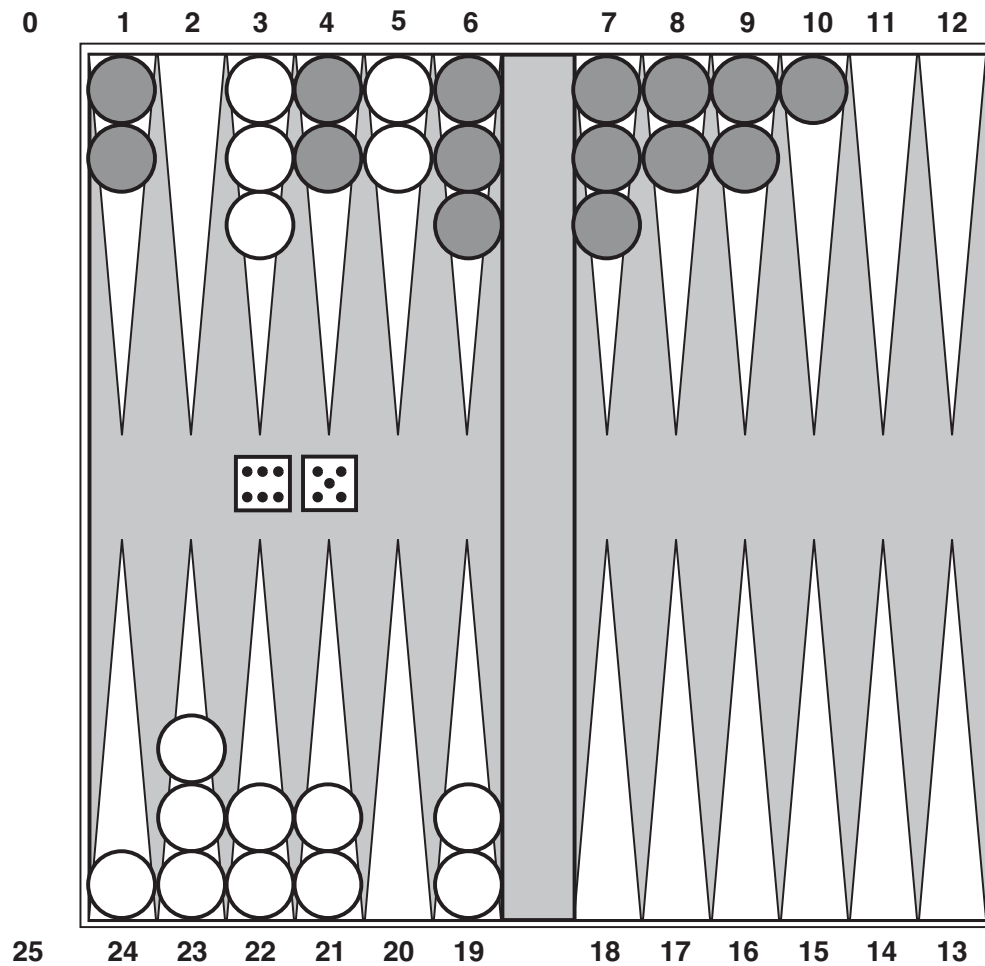
Chess: Deep Blue defeated human world champion Gary Kasparov in a six-game match in 1997. Deep Blue searches 200 million positions per second, uses very sophisticated evaluation, and undisclosed methods for extending some lines of search up to 40 ply.

Othello: human champions refuse to compete against computers, who are too good.

~~Go: human champions refuse to compete against computers, who are too bad. In go,  $b > 300$ , so most programs use pattern knowledge bases to suggest plausible moves.~~

# Stochastic games

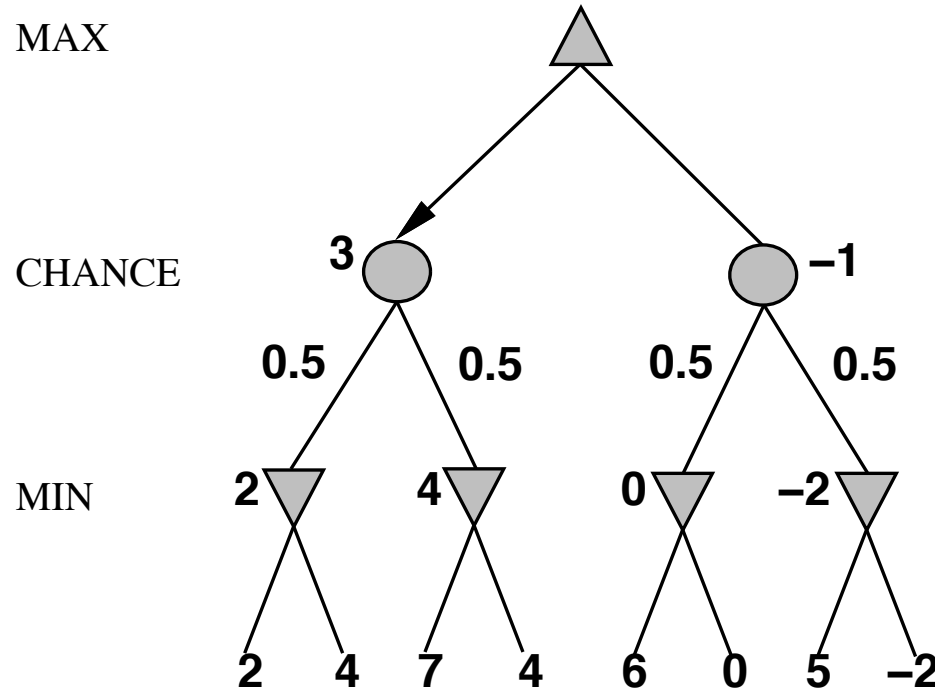
backgammon:



# Expect-minimax

In nondeterministic games, chance introduced by dice, card-shuffling

Simplified example with coin-flipping:



EXPECTIMINIMAX( $s$ ) =

$$\left\{ \begin{array}{ll} \text{UTILITY}(s) & \text{if } \text{TERMINAL-TEST}(s) \\ \max_a \text{EXPECTIMINIMAX}(\text{RESULT}(s, a)) & \text{if } \text{PLAYER}(s) = \text{MAX} \\ \min_a \text{EXPECTIMINIMAX}(\text{RESULT}(s, a)) & \text{if } \text{PLAYER}(s) = \text{MIN} \\ \sum_r P(r) \text{EXPECTIMINIMAX}(\text{RESULT}(s, r)) & \text{if } \text{PLAYER}(s) = \text{CHANCE} \end{array} \right.$$



# Nondeterministic games in practice



Dice rolls increase  $b$ : 21 possible rolls with 2 dice

Backgammon  $\approx$  20 legal moves (can be 6,000 with 1-1 roll)

$$\text{depth } 4 = 20 \times (21 \times 20)^3 \approx 1.2 \times 10^9$$

As depth increases, probability of reaching a given node shrinks

$\Rightarrow$  value of lookahead is diminished

$\alpha$ - $\beta$  pruning is much less effective

TDGAMMON uses depth-2 search + very good EVAL

$\approx$  world-champion level

# Games of imperfect information



E.g., card games, where opponent's initial cards are unknown

Typically we can calculate a probability for each possible deal

Seems just like having one big dice roll at the beginning of the game\*

**Idea:** compute the minimax value of each action in each deal,  
then choose the action with highest expected value over all deals\*

Special case: if an action is optimal for all deals, it's optimal.\*

GIB, current best bridge program, approximates this idea by

- 1) generating 100 deals consistent with bidding information
- 2) picking the action that wins most tricks on average

# Proper analysis



\* Intuition that the value of an action is the average of its values in all actual states is **WRONG**

With partial observability, value of an action depends on the **information state** or **belief state** the agent is in

Can generate and search a tree of information states

Leads to rational behaviors such as

- ◇ Acting to obtain information
- ◇ Signalling to one's partner
- ◇ Acting randomly to minimize information disclosure